

Post-War Building Damage Detection [†]

Ali J. Ghandour ^{1,*} and Abedelkarim A. Jezzini ²

¹ National Council for Scientific Research, 59, Zahia Salmane street, Jnah P.O. Box 11-8281, Beirut, Lebanon

² Islamic University of Lebanon, P.O. Box 30014, Beirut, Lebanon; abedelkarim.j@gmail.com

* Correspondence: aghandour@cnrs.edu.lb

[†] Presented at the 2nd International Electronic Conference on Remote Sensing, 22 March–5 April 2018; Available online: <https://sciforum.net/conference/ecrs-2>.

Published: 22 March 2018

Abstract: Natural disasters and wars wreak havoc not only on individuals and critical infrastructure, but also leave behind ruined residential buildings and housings. The size, type and location of damaged houses are essential data sources for the post-disaster reconstruction process. Building damage detection due to war activities has not been thoroughly discussed in the literature. In this paper, an automated building damage detection technique that relies on both pre- and post-war aerial images is proposed. Building damage estimation was done using shadow information and Gray Level Co-occurrence Matrix features. Accuracy assessment applied over a Syrian war-affected zone near Damascus reveals the excellent performance of the proposed technique.

Keywords: damage detection; post-war analysis; building extraction; remote sensing

1. Introduction

Wars are among the most catastrophic disasters to affect mankind. One of the critical post-war activities is damaged building assessment. The area, amount, rate, and type of the damage are essential information for rescue, humanitarian and reconstruction operations in the affected area [1].

Following a war or a natural catastrophic disaster (such as earthquake), special teams are formed with responsibility to scan (survey) the affected area to evaluate the degree of damage in properties and buildings. This traditional approach of building damage assessment is time consuming and requires huge labor hours in order to cover the affected zone, especially in case of nation-wide war, and thus, is not practical or effective.

Remote sensing techniques can play an important role in obtaining building damage information, mainly due to their wide availability at relatively low cost, wide field of view, and fast response capacities. The contribution behind this paper lies in introducing an automated framework for building damage detection in war-affected areas based on high resolution satellite images.

The proposed approach depends on both pre- and post-war images. Affine transformation is firstly used as a pre-processing step to correct geometric distortions or deformations that occur with non-ideal camera angles. Next, building detection is applied on the pre-war image. Detected buildings positions will be projected on the post-image, resulting in a set of damaged buildings candidates. Finally, thorough damage analysis is done using three main features: (i) shadow; (ii) variance; and (iii) correlation.

The remainder of this manuscript is organized as follows. Section 2 presents a literature review of published research on building damage detection. Section 3 introduces the framework of our proposed methodology. Performance analysis and experimental results are shown in Section 4. Finally, the conclusion is given in Section 5.

2. Literature Review

Many techniques have been introduced in the literature for destruction recognition mainly due to natural disasters such as earthquakes. However, war damage detection and estimation has not been thoroughly studied.

Building damage detection based on color information is presented in [2]. Gray level histogram features are used to separate the housing construction units from complex background. After that, a building damage detection algorithm based on regional statistical information is implemented. Experimental results applied on Haiti post-earthquake images captured from Google Earth show that proposed approach is effective and feasible.

Indonesia Earthquake damage detection is presented in [3]. The idea is based on image classification technique applied to post-earthquake QuickBird images to detect areas covered with bricks (damaged buildings). The classification technique is based on the spectral reflectance of surface materials, where the distribution of the building damage is evaluated using a proposed *DamageIndex*.

Sirmacek et al. [4] used shadow information to evaluate buildings damage state. They defined the degree of damage in buildings to be the area of the rooftop segment over the area of the corresponding shadow segment. For damaged buildings, shadow region will be smaller which leads the rooftop to shadow ratio to have higher values.

Object oriented change detection of buildings using images captured for Thailand December 2004 Tsunami is implemented in [5]. A robust rectangular building detection process is introduced to discover buildings with different sizes. Damage detection is carried out by comparing size, height, width, orientation, and *RGB* spectral properties of buildings in pre- and post-disaster images.

Pixel-based classification based on the maximum likelihood method was carried over the aerial images captured for affected areas both before and after the 2007 Indonesian earthquake [6]. In addition, object-based classification was conducted to overcome some highlighted limitations of the pixel based classification. Debris of collapsed buildings was extracted correctly with reasonable effectiveness results.

Istanbul earthquake damage assessment was conducted in [7], where the building damage analysis was performed using *HAZTURK* software. Results from the damage analysis for districts and sub-districts is presented and compared with other studies, showing an acceptable building damage estimation results.

3. Proposed Methodology

In this section, we discuss in detail our proposed building damage detection algorithm that depends on both pre- and post-war images.

3.1. Damaged Building Candidates

Pre- and post-war images may be captured with different camera type and angle and in different capturing conditions. Our first pre-processing step is to apply affine transformation to uniformly reference both images.

Then, any building detection algorithm can be applied on the pre-war image to extract the set of existing buildings in the region of interest. For the scope of this work, we used building detection algorithm proposed in [8] without loss of generality. We constructed an array of the centroids of the detected buildings in the pre-war image, which we refer to as Pre-war Buildings' Centroids Set *PBCS*.

Damaged building candidates were obtained through the projection of *PBCS* on the post-war image. Shadow detection algorithm was also implemented on the post-war image where potential shadows areas that surrounds damaged buildings candidates are extracted. The discussion of the details of the used shadow and building detection algorithms are beyond the scope of this manuscript.

3.2. Features Calculation

It's well known that buildings shadows reflect the geometric representation of the building unit. Thus, if the building is affected by an explosion or air strike, its corresponding shadow will be deformed. In our approach, pre- and post-war shadow area are computed and compared. If their difference exceeds a certain threshold, then the building structure is labeled as potentially damaged.

Gray Level Co-occurrence Matrix (*GLCM*) represents second order statistical texture features of an image. *GLCM* is a matrix where the number of rows and columns is equal to the number of gray levels, G , in the image. The matrix element $P(i, j | \Delta x, \Delta y)$ is the relative frequency with which two pixels, separated by a pixel distance $(\Delta x, \Delta y)$, occur within a given neighborhood, one with intensity i and the other with intensity j .

GLCM is a popular statistical method of extracting textural feature from images. In this paper, two features are utilized to locate damaged buildings within the post-war image: (i) variance; and (ii) correlation.

Variance is used to measure the image homogeneity, as shown in Equation (1):

$$Variance = \sum_{i=0}^{G-1} \sum_{j=0}^{G-1} (i - \mu)^2 \cdot P_{ij} \tag{1}$$

where i, j are the spatial coordinates of the function $P(i, j)$, G is the number of gray levels used and μ is the mean intensity value.

Correlation, defined in Equation (2), measures the linear dependency of gray levels on those of neighboring pixels. This is often used to measure deformation, displacement, strain and optical flow. In our proposed algorithm, we used the correlation parameter to measure spatial deformations in building structure in pre- and post-war images.

$$Correlation = \frac{\sum_{i=0}^{G-1} \sum_{j=0}^{G-1} (i, j) P_{ij} - \mu_x \mu_y}{\sigma_x \sigma_y} \tag{2}$$

As a decision making process, three hypotheses are checked: (i) Shadow Area Difference (*SAD*) between pre- and post-war images should exceed a predefined threshold; (ii) Variance Difference (*VD*) should exceed a predefined threshold; and (iii) Correlation Difference (*CD*) should exceed a predefined threshold.

If no building shadow exists in the post-war image, then the building will be classified directly as a damaged building. Threshold selection is done experimentally for the scope of this work. In future work, machine learning techniques will be used to design an optimal classifier.

Figure 1 shows the block diagram of the proposed building damage detection algorithm.

4. Experimental Results

The literature does not provide, to the best of our knowledge, a relevant dataset for war affected areas to benchmark against. Thus, we focused in this work on images taken in 2015 during the Syrian civil war for Zabadani region near Damascus. Figure 2a,b depicts the pre- and post-war original images captured on 18 May 2015 and 5 August 2105, respectively, using GeoEye-1.

Table 1 shows the values for *SAD*, *VD* and *CD*, respectively, for five buildings labeled in Figure 3a (post-war Zabadani Study Area). Damaged buildings are labeled using red color, while normal ones are labeled using green. Results for remaining buildings are omitted due to space limitation.

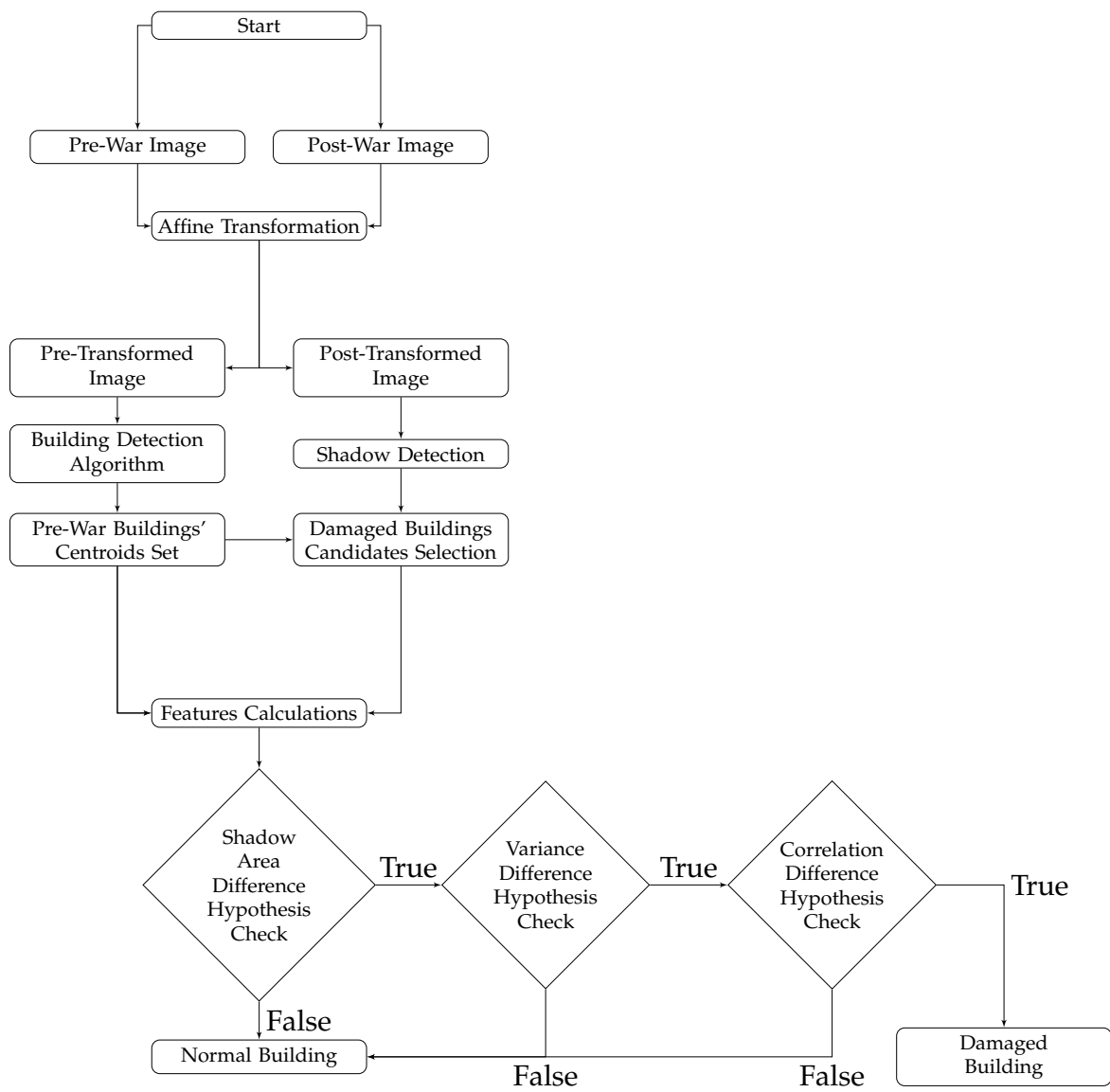


Figure 1. Proposed building damage detection block diagram.



Figure 2. (a) pre-war; and (b) post-war original images for Zabadani Study Area.

Table 1. Damage assessment parameters for Zabadani study area.

Building Number	Shadow Area		SAD	Variance		VD	Correlation		CD	Algorithm Classification	Ground Truth
	Pre	Post		Pre	Post		Pre	Post			
1	870	560	310	81.3	75.51	5.79	31.76	28.04	3.72	Normal	Normal
2	2650	2295	355	119.04	76.21	42.83	40.47	25.93	14.54	Damaged	Damaged
3	1604	2135	531	115.96	72.12	43.84	47.59	29.26	18.33	Damaged	Damaged
4	356	No Shadow	NA	120.51	80	40.51	43.28	26.61	16.67	Damaged	Damaged
5	250	100	150	88.75	76.64	12	39.64	30.86	8.78	Normal	Damaged



Figure 3. (a) Five labeled buildings investigated in details in Table 1; and (b) shows building damage assessment results of the proposed algorithm.

For Building 4, no shadow is detected in the post-war image and thus the relative building is considered as totally damaged. Generally, normal buildings have high spatial relation between their gray levels in addition to higher homogeneity, and vice versa. Therefore, normal buildings Variance and Correlation values are higher than those of damaged buildings. Building 5 is misclassified as a normal building due the absence of noticeable major structure deformation in the post war image, thus having low *VD* and low *CD* values.

Figure 3b shows the resultant image of applying proposed building damage detection algorithm on Zabadani study area, where truly detected normal buildings are labeled with a green tic-mark, truly detected damaged buildings are labeled with a red tic-mark, and undetected damaged buildings are marked with a black cross. Table 2 shows the accuracy assessment results for the proposed building damage detection algorithm using three metrics defined as follows:

$$\text{Branching Factor (BF)} = \frac{FP}{TP} \tag{3}$$

$$\text{Miss Factor (MF)} = \frac{FN}{TP} \tag{4}$$

$$\text{Quality Percentage (QP)} = 100 \times \frac{TP}{TP + FP + FN} \tag{5}$$

where *TP* stands for True Positive, *FP* False Positive and *FN* False Negative.

As shown in Table 2, out of a total of 16 damaged buildings within Zabadani study area, 13 were correctly classified. The overall quality percentage of building damage detection is 81.25%, revealing the robustness and good performance of the proposed method, due to the integration of shadow information and texture characteristics.

Table 2. Accuracy assessment of Zabadani study area that includes 37 buildings objects.

Algorithm	True Positive	False Positive	False Negative	Branching Factor	Miss Factor	Quality Percentage
Normal Building Detection	22	1	0	0.04	0	95.65%
Damaged Building Detection	13	0	3	0	0.23	81.25%

5. Conclusions

In this paper, we propose an automated building damage detection algorithm from high-resolution satellite data. Shadow information is utilized in addition to variance and correlation *GLCM* features. Experimental results of applying the proposed algorithm on pre- and post-war images captured for Zabadani area in Syria reveal the good performance and robustness of the proposed algorithm with 81.25% quality percentage. In future work, we will carry out pixel-based buildings damage analysis, in addition to using machine learning techniques to devise an optimal classifier. Moreover, future work includes the extension of the proposed approach to classify damaged buildings into several states based on destruction severity.

Acknowledgments: This project has been funded with support from National Council for Scientific Research in Lebanon.

References

1. Dong, L.; Shan, J. A comprehensive review of earthquake-induced building damage detection with remote sensing techniques. *ISPRS J. Photogramm. Remote Sens.* **2013**, *84*, 85–99.
2. Xuegui, X.; Li, X.; Liu, C. Building damage detection based on single high-resolution remote sensing imagery. In Proceedings of the International Conference on Automatic Control and Artificial Intelligence, Xiamen, China, 3–5 March 2012; pp. 618–621.
3. Miura, H.; Yamazaki, F. Identification of Damaged Areas due to the 2006 Central Java, Indonesia Earthquake Using Satellite Optical Images. In Proceedings of the Urban Remote Sensing Joint Event, Paris, France, 11–13 April 2007.
4. Sirmacek, B.; Unsalan, C. Damaged Building Detection in Aerial Images using Shadow Information. In Proceedings of the 4th International Conference on Recent Advances in Space Technologies, Istanbul, Turkey, 11–13 June 2009; pp. 11–15.
5. Rudahl, T.; Goldin, S. Object Oriented Change Detection of Buildings after a Disaster. In Proceedings of the ASPRS Annual Conference Baltimore, MD, USA, 7–11 March 2010; pp. 9–13.
6. Singh, R.; Verma, P. Damage Detection caused by Natural Disaster using Image Processing Technique. *Int. J. Recent Innov. Trends Comput. Commun.* **2015**, *3*, doi:10.17762/ijritcc2321-8169.1504112.
7. Konukcu, B.; Karaman, H.; Sahin, M. Building damage analysis for the updated building dataset of Istanbul. *Nat. Hazards* **2016**, doi:10.1007/s11069-016-2530-7.
8. Ghandour, A.J.; Jezzini, A. Autonomous Building Detection using Edge Properties and Image Color Invariant. *Buildings* **2018**, *8*, 65, doi:10.3390/buildings8050065.



© 2018 by the authors. Licensee MDPI, Basel, Switzerland. This article is an open access article distributed under the terms and conditions of the Creative Commons Attribution (CC BY) license (<http://creativecommons.org/licenses/by/4.0/>).